



kahua™



# **Crossland Morpheus Case Study**

**Kahua's Flexible System  
and Morpheus' Integration  
Allow Crossland  
Construction to Increase  
Efficiency**

# CROSSLAND

Crossland Construction Company is one of the top 100 [general contractors](#) in the United States. It designs, builds and manages construction of buildings for government, education, healthcare, retail and others totaling over \$500 million in revenue annually.

## Challenges

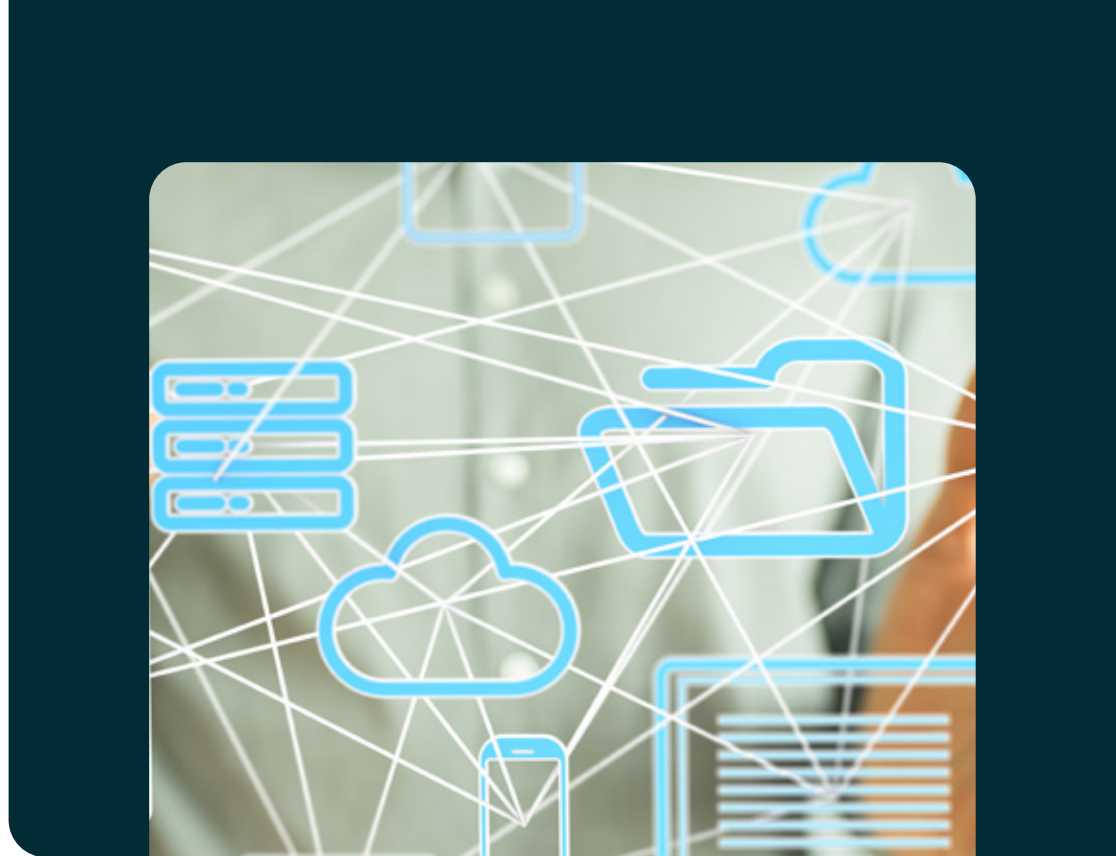
Crossland had been using various point solutions for years, with each of its offices following different processes and workflows. This **disjointed** approach made it difficult to manage its large portfolio of projects. It needed to consolidate many of its applications and replace point solutions so it could enforce consistency across its locations and gain visibility into the status of each program in a single solution.

Crossland briefly adopted another [program management information software](#) (PMIS), but it turned out to be too rigid to adapt to multiple integrated systems or unique requirements. These performance gaps began to impact Crossland's ability to deliver projects on time and on budget, so the decision was made to move forward with a different system.

## Requirements

When searching for a replacement, the focus was ensuring the new system was able to handle large integrations. For it to be successful, Crossland needed a system that would be able to integrate over **25 different applications**, including its financial system Viewpoint Spectrum and its internal intranet.

With projects being managed by more than 1,000 employees across nine offices, Crossland needed a single solution that would enforce shared practices on document control, cost codes, workflows and processes, enabling the team to be more efficient and consistent. And while some parts of the systems needed standardization, other parts of the system needed to be **flexible** to meet precise requirements on various project specifications.



## Solutions

A great benefit of teaming with Kahua means Crossland has access to the Kahua Partner Network, which includes organizations with a wide variety of specialties. Crossland leverages the expertise of Morpheus to assist with the integration of its Spectrum enterprise resource planning application. With this integration, Crossland financial team members can remain in Spectrum for their daily activities, **reducing multiple logins** for separate systems.

This also **removes duplicate data entry** which **eliminates potential data entry errors**. The rest of the Crossland team can input any daily change orders or budget information in Kahua, and these updates are reflected in real time back into Spectrum.

Standard processes in the Kahua system keep the Crossland team on the same page and ensure no time is wasted on rework or duplicate efforts. Higher accountability enables the team to work at a reported **20% increase in efficiency**, and the integrated environment builds momentum for everyone associated with the project. Kahua assists Crossland in meeting specific project requirements with its highly flexible system that can configure workflows and processes to meet its needs.



“Kahua provides solutions aligned to our specific goals so we can continue to improve the quality and timeliness of our projects.”

**Colin Fisher | Chief Information Officer at Crossland Construction**



“Because of the seamless integration, project financial data is always up to date, so Crossland has detailed information and complete **visibility** into its project budgets. Having the most accurate data allows Crossland to make better decisions which improves project delivery and reduces risk.”

**Guy Barlow | Director of Strategy & Business Development at Morpheus Technology Group**

## Why Kahua

**Single Source of Truth:** All information is integrated in one place, increasing visibility.

**Configuration:** System and processes are tailored to specific requirements.

**Standardization:** Best practice solutions streamline project management.

## Why Morpheus

**Fully Automated:** Real-time, automated data movement without human intervention.

**Complete Control:** Self-service capabilities to manage integrations and maintain control so no outside consultants are needed.

**Unlimited Workflow Configurability:** Update and create workflows when you need them.

## Kahua Partner Network

With the right system and the right partners, integration does not have to be a burden. Kahua and its [network of partner organizations](#) not only provide technology but also industry knowledge and expertise. Kahua and its partners offer designed integrations with embedded solutions like DocuSign or Bluebeam; ecosystem apps like PlanGrid, Primavera, or P6; and Enterprise Resource Planning (ERP) systems like Lawson, JD Edwards, SAP or Oracle.

### Choose Kahua

Kahua is a leading provider of capital program and construction project management software, enabling innovation that is changing the way that capital programs are planned and delivered. Global organizations use Kahua’s collaborative solution to improve efficiency, lower costs and reduce project risk throughout the entire lifecycle of their capital programs. Our purpose-built solutions for owners, program managers and contractors enable rapid implementation that minimizes time-to-value and enhances user adoption. With the industry’s only low-code application platform, customers can easily customize existing Kahua apps or even build their own new apps to run their business at peak efficiency today and rapidly adapt as business conditions dictate.

Learn more and request a demo today or email us at: [connect@kahua.com](mailto:connect@kahua.com)



MAY 2022